



PIPE SUPPORT



Grip Lock

Best selling versatile clip mounts to any surface.
Ideal for air conditioning line sets.



Channel



Rod



Surface

Key Features

- Fits directly to a wall or solid ceiling
- Hinged for rapid pipe installation
- Space for electrical cables and condensate hose
- Zinc and colour passivated to resist corrosion
- Wide metal components for good pipe support

SPECIFICATIONS

Materials of construction	Zinc passivated mild steel
Max. rec. distance per clip	1,2 m
Max. temp	1000 °C

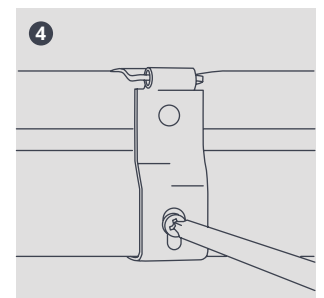
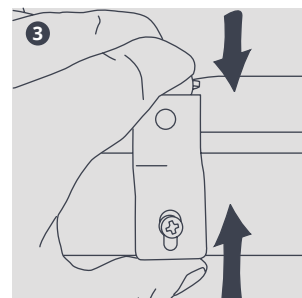
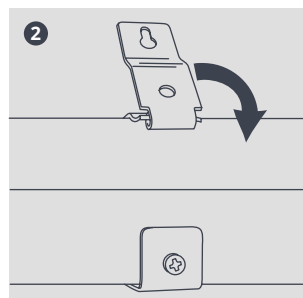
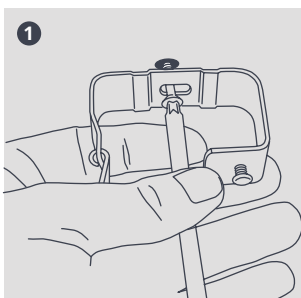
SIZING OPTIONS

Size	Liquid*	Gas*	Width (mm)	Height (mm)	Part No.	
Size 1	6 mm (1/4")	13 mm (1/2")	54	30	B6186/10	10
Size 2	10 mm (3/8")	16 mm (5/8")	60	32	B6187/10	10
Size 3	13 mm (1/2")	22 mm (7/8")	67	37	B6188/10	10
Size 4	16 mm (5/8")	28 mm (1 1/8")	80	46	B6189/10	10

* Approximate pipe sizes (allowing for 13mm insulation)



For further details please refer to our website aspenpumps.com



Information correct at time of going to press. Not all products are available in all regions.