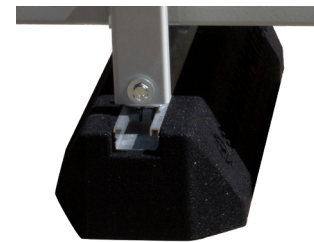
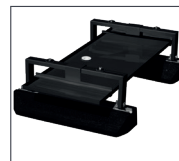
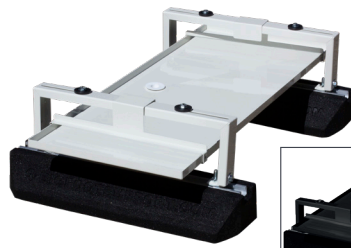
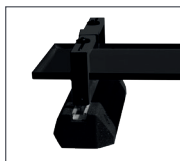
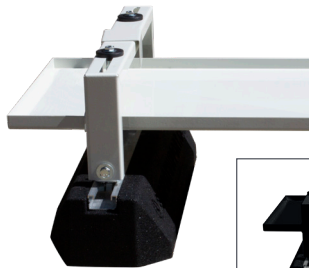
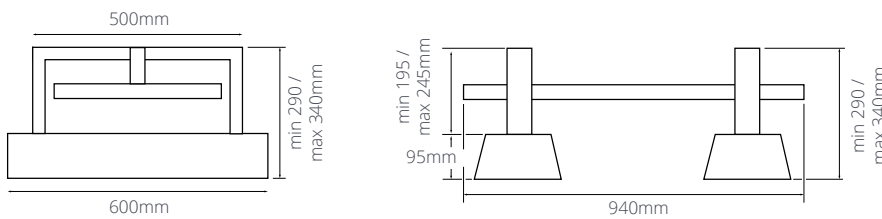


Heat Pump Drip Tray Kit

KEY FEATURES

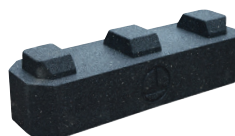
- Drip Tray, Feet and bracket pack all in one box kit
- Anti vibration Big Foot Fix-It feet 600 included
- Min 290 / max 340mm ground clearance for better airflow around heat pump
- High Bloc feet available as optional accessories to increase ground clearance
- Metal work in RAL9002 (white) RAL9005 (black)
- Made from 20/10 Galvanised Steel
- Polyester powder coated finish (approx. 100µm thickness)
- M8 8.8 zinc passivated carbon steel high strength fixings included

Description	Part no.	Width (mm)	Height (mm)	Depth (mm)	Working Load (Kg)	Max. Load (Kg)
Heat Pump Drip Tray Kit (white)	B2075	940	min 290 / max 340	420 (Drip Tray)	300	300
Heat Pump Drip Tray Kit (black)	B2076			600 (Feet)		
Spare Metal Tray and Hooks for Stand Brackets (white)	S-096-71	940	-	420	-	-



Extra clearance can be created using a **High Bloc** which fits underneath.

- Quick and simple install



Information correct at time of going to press.