



PIPE SUPPORT



Plastic Hanger

This dual stud size clamping system will fit securely to both M8 and M10 studding.



Channel



Rod



Surface

Key Features

- Easy installation
- Fits on both M8 and M10 studding
- Avoids the need for cable tray
- Adjustable clipping mechanism

SPECIFICATIONS

Materials of construction	Nylon
Max. temp	70°C
Max. rec. distance per clip	1.2m

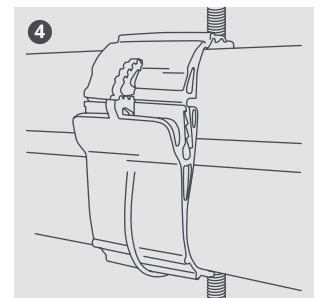
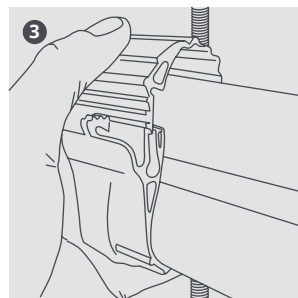
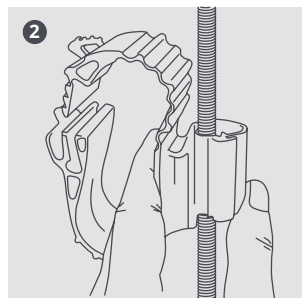
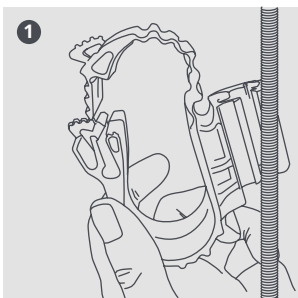
SIZING OPTIONS

Description	Liquid*	Gas*	Rod Fitting Size	Part No.	Pack Qty
P2	10mm (3/8")	16mm (5/8")	8 or 10mm	B6543/5	5
P3	13mm (1/2")	22mm (7/8")	8 or 10mm	B6544/5	5
P4	16mm (5/8")	28mm (1 1/8")	8 or 10mm	B6545/5	5
P2	10mm (3/8")	16mm (5/8")	6 or 8mm	B6715/5	5
P3	13mm (1/2")	22mm (7/8")	6 or 8mm	B6716/5	5
P4	16mm (5/8")	28mm (1 1/8")	6 or 8mm	B6717/5	5

* Approximate pipe sizes (allowing for insulation)



For further details please refer to our website aspenpumps.com



Information correct at time of going to press. Not all products are available in all regions.

UK

part of ASPEN PUMPS GROUP

aspenpumps.com | +44 (0)1323 848842 | sales@aspenpumps.com

47