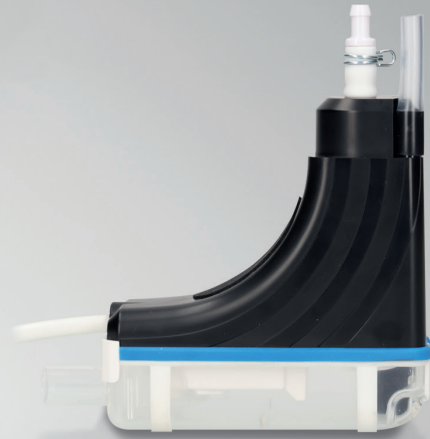


# Mini Frio



## CONDENSATE REMOVAL PUMP

**20**  
L/h flow  
rate

**10m**  
max head

**21**  
dB(A)

The Mini Frio Condensate Removal Pump is a compact, elbow-style pump engineered for seamless installation within trunking for mini split air conditioning systems. Designed for quiet, efficient condensate evacuation, it delivers reliable performance while remaining suitable for noise-sensitive environments such as bedrooms. Its installer-focused design allows for straightforward installation, easy access for servicing, and long-term maintenance efficiency making the Mini Frio an ideal solution for discreet, professional mini split installations.

### KEY FEATURES

- Fast install
- Easy maintenance access
- Removable reservoir
- Quiet operation
- Rotary diaphragm technology
- 2 year warranty

### SUITABILITY

- Up to 26kW / 90,000Btu/h
- High wall split systems
- Perfect for: domestic and commercial use – where easy maintenance is key

### IN THE BOX

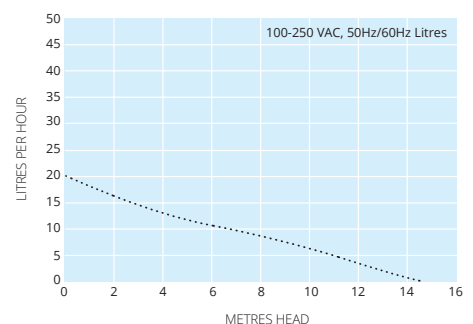
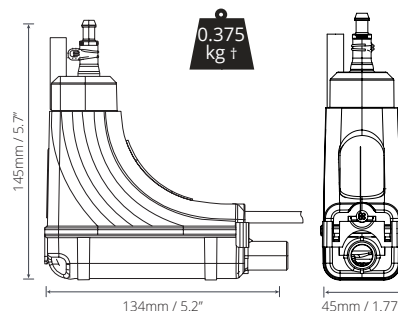
- Trunking pack: Mini Frio elbow pump, 500mm inlet hose 14mm ID, Elbow front and back, Ceiling plate, 600mm EuroSplit trunking front and back, Drain connector kit, Quick start guide
- Pump only: Mini Frio elbow pump, 220mm inlet hose 14mm ID, Drain connector kit, Quick start guide

### SPECIFICATIONS

Max. flow	20L/h @ 0m head
Max. rec. head	10m
dB(A) @ 1m	As low as 21dB(A)
Power supply	100-250 VAC, 0.18A, 2.1W, 50/60Hz
Rated	Continuous
Class	II □
Max. unit output	Up to 26kW (90,000Btu/h)
Max. ambient temp	40°C
Inlet/Outlet connections	Inlet o/d: Ø16mm Outlet o/d: Ø6mm
IP Protection	IP24
Safety switch	5.0A N.C. (Normally Closed)
Self priming	✓

### PRODUCT OPTIONS

System	Colour	Part No.
EuroSplit	○ Pure White	MS32E9010
	○ Signal White	MS32E9003
	○ Light Ivory	MS32E1015
Mini Frio Pump Only		MS32E



Information correct at time of going to press.