



2EMMECLIMA

GROUND
INSTALLATION

BROOKLYN BASE



SBR

AI

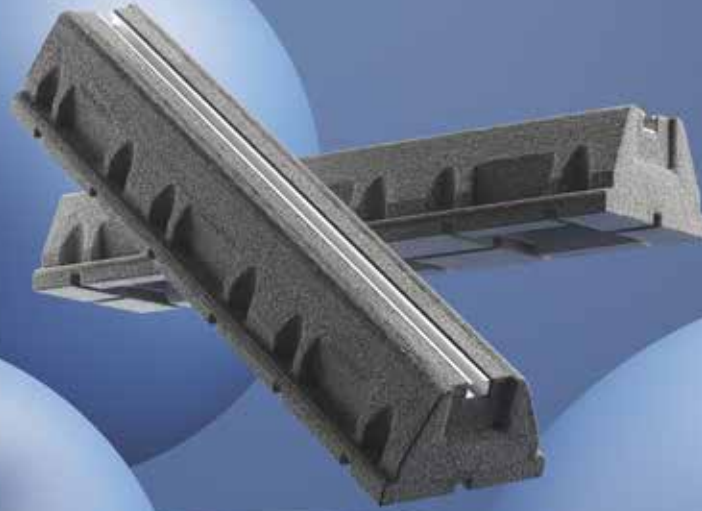


100↔500 KG

TiRAN
SUPPORT SYSTEMS



H100



RISER

M10 BOLT AND NUT



W200mm



20x15mm



41x21mm

GROUND BASE MADE FROM
SBR RECYCLED RUBBER
AND ALUMINIUM STRUT.

Foot & M10 Bolts

| 20x15mm | 41x21mm | Strapped | Boxed | Feet Qty | Dimensions L x H x W mm | Max. load per foot |
|-----------|-----------|----------|-------|----------|-------------------------|--------------------|
| S-632.1/2 | S-732.1/2 | ✓ | ✗ | 2 | 250 x 95 x 150mm | 100kg |
| S-634.1/2 | S-734.1/2 | ✓ | ✗ | 2 | 400 x 95 x 150mm | 200kg |
| S-636.1/2 | S-736.1/2 | ✓ | ✗ | 2 | 600 x 95 x 150mm | 500kg |
| S-630.1/2 | S-730.1/2 | ✓ | ✗ | 2 | 1000 x 95 x 150mm | 500kg |
| S-642.1/2 | - | ✓ | ✗ | 2 | 1200 x 95 x 150mm | 500kg |

Foot & M10 Bolts

| 20x15mm | 41x21mm | Strapped | Boxed | Feet Qty | Dimensions L x H x W mm | Max. load per foot |
|---------|---------|----------|-------|----------|-------------------------|--------------------|
| S-632/4 | S-732/4 | ✗ | ✓ | 4 | 250 x 95 x 150mm | 100kg |
| S-634/2 | S-734/2 | ✗ | ✓ | 2 | 400 x 95 x 150mm | 200kg |
| S-636/2 | S-736/2 | ✗ | ✓ | 2 | 600 x 95 x 150mm | 500kg |
| S-636.3 | S-736.3 | ✗ | ✓ | 3 | 600 x 95 x 150mm | 500kg |
| S-630 | S-730 | ✗ | ✗ | 1 | 1000 x 95 x 150mm | 500kg |

Foot Only

| 20x15mm | 41x21mm | Strapped | Boxed | Feet Qty | Dimensions L x H x W mm | Max. load per foot |
|---------|---------|----------|-------|----------|-------------------------|--------------------|
| C-852 | C872 | ✗ | ✗ | 1 | 250 x 95 x 150mm | 100kg |
| C-854 | C-874 | ✗ | ✗ | 1 | 400 x 95 x 150mm | 200kg |
| C-856 | C-876 | ✗ | ✗ | 1 | 600 x 95 x 150mm | 500kg |
| C-860 | C-870 | ✗ | ✗ | 1 | 1000 x 95 x 150mm | 500kg |

Riser block made from SBR recycled rubber to combine with Brooklyn BASE feet.
Total Height once combined: 200mm

| Part No. | Strapped | Boxed | Feet Qty | Dimensions L x H x W mm | Max. Load |
|----------|----------|-------|----------|-------------------------|-----------|
| S-742 | ✗ | ✗ | 1 | L250 x H95 x W200mm | 100kg* |
| S-744 | ✗ | ✗ | 1 | L400 x H95 x W200mm | 200kg* |
| S-746 | ✗ | ✗ | 1 | L600 x H95 x W200mm | 500kg* |
| S-740 | ✗ | ✗ | 1 | L1000 x H95 x W200mm | 500kg* |

*Max. Load per piece

Information correct at the time of going to press. Not all products are available in all regions.

UK

part of ASPEN PUMPS GROUP

aspenspumps.com | +44 (0)1323 848842 | sales@aspenspumps.com

75