

# Technical data sheet

## RTU™ ECD

### Evaporator cleaner and disinfectant



RTU™ ECD is an evaporator cleaner and disinfectant which has been formulated to address concerns over indoor air quality. Its highly effective cleaning action improves the efficiency of your system, while its disinfectant ensures total hygiene. The improved formulation now includes QX-60® – a high-strength disinfectant that kills 99.9% of germs in 60 seconds or less. This gives extra reassurance that the unit is safe and clean.

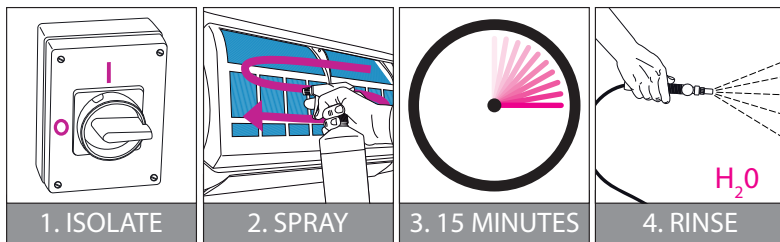
#### PRODUCT SPECIFICATION

Name	RTU™ ECD
Product Code	S010196GB, S010192GB
Packing Quantity (ml, L)	8 x 1 Litre, 4 x 5 Litre
Packing Size (L x H x D cm)	36.5 x 25 x 27.5, 40 x 30 x 27
Shipping Weight (kg)	9.24, 21.58
Shipping Volume (m3)	0.0202, 0.0324
Soils	Dust, airborne pollutants, bacteria, mould, slime, virus.

#### Special Features

- With QX-60® - Kills 99.9% of bacteria in 60 seconds or less
- Eliminates known viruses
- Complies with British & European Standards for disinfectants (BS/EN 1040, BS/EN 1275, BS/EN 1276, BS/EN 1650 and BS/EN 13697, BS/EN 13727)

## Directions of use



Isolate electrics. Spray into coil, starting at top corner and working methodically across and down. Keep all surfaces wet for 15 minutes. Rinse thoroughly with clean water after use.

Use RTU® Evaporator cleaner & disinfectant in line with normal maintenance schedule.

Store upright in a cool, dry place.

#### Disposal

Product: Incineration on land

Container: Clean with water. Dispose of as normal industrial waste. Do not reuse empty container.

**RTU™ ECD**  
**Warning**

H315: Causes skin irritation. H319: Causes serious eye irritation. P261: Avoid breathing spray. P262: Do not get in eyes, on skin, or on clothing. P264: Wash hands thoroughly after handling. P280: Wear protective gloves / protective clothing / eye protection / face protection. P303+361+353: IF ON SKIN (or hair): Take off immediately all contaminated clothing. Rinse skin with water. P305+351+338: IF IN EYES: Rinse cautiously with water for several minutes. Remove contact lenses, if present and easy to do. Continue rinsing.

#### Preparation Type

Liquid

#### Biocides

Di-n-decyl dimethylammonium chloride, 0.811g/100g

Use biocides safely. Always read the label and product information before use.

Approved by



**BlueDiamond™**  
The only fit and forget condensate pumps

