



# TYPE 2



INOX



COLOUR



CERTIFIED  
100-160 KG

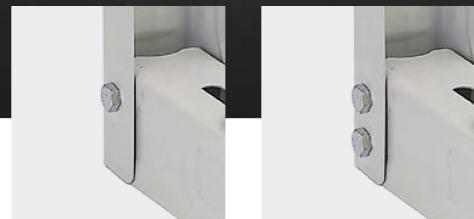


2 EMME CLIMA

**PLUS - M8 8.8**

450 mm

520 / 560 / 600 mm



[IT]

**STAFFE UNIVERSALI REGOLABILI  
PREMONTATE E NON.**

[EN]

**ADJUSTABLE UNIVERSAL PRE-  
ASSEMBLED WALL BRACKETS  
AND NON.**

[FR]

**SUPPORTS MURAUX RÉGLABLES  
PRÉMONTÉS OU NON.**

		Zn	AISI 304		
<b>S-221</b>	P450xH400xL800 mm			120 set	100 kg
<b>S-281</b>	P450xH400xL800 mm	X	X	120 set	160 kg
<b>S-272*</b>	P520xH400xL800 mm	X	X	120 set	160 kg
<b>S-273*</b>	P560xH400xL800 mm			120 set	160 kg
<b>S-274*</b>	P600xH400xL800 mm	X		120 set	160 kg

\*Disponibile versione con barra L 1000 mm  
Available with crossbar L 1000 mm  
Disponibile avec barre de L 1000 mm